

# LEGION 5i Pro (16")

## Calibrated to conquer.

Decimate the competition, leave no one standing. Running 12<sup>th</sup> Generation Intel® Core™ processors, up to NVIDIA® GeForce RTX™ 3070 Ti (150W) graphics, and the Legion AI Engine designed to auto-detect and auto-optimize your in-game performance, vie for victory and vanquish all foes with the Legion 5i Pro. In stunning and precise WQHD+ (2560 x 1600) with an up to 240 Hz variable refresh rate display at a massive 16" 16:10 aspect ratio, it's bigger, it's better, and it's born to conquer. And with Legion Coldfront 4.0 technology and a sleek choice between Storm Grey and Glacier White, the only decision you'll have left is what color you want your trophy.

### WHY YOU SHOULD BUY THE LENOVO LEGION 5i PRO (16")



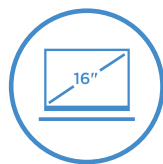
#### Desktop caliber gaming happens with Intel®

Take a revolutionary leap into real-world hybrid performance with 12<sup>th</sup> Generation Intel® Core™ processors, WiFi 6E and DDR5 memory support.



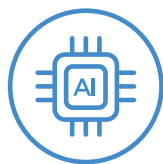
#### Full powered RTX. It's On.

Experience the most realistic gaming experiences with NVIDIA® GeForce RTX™ 30 Series graphics delivering ray tracing and advanced DLSS to your favorite games.



#### Serious frame advantage

Blaze past the competition with the world's first 16" WQHD+ (2560 x 1600) up to 240 Hz adaptive refresh rate display with a 16:10 aspect ratio.



#### Max AI tuned performance

The Legion AI Engine leverages AI to custom calibrate your system for the most popular AAA titles, while Legion Coldfront 4.0 deploys advanced thermal technologies for maximum frame rates with zero throttling.



[WWW.LENOVO.COM](http://WWW.LENOVO.COM)



Lenovo

# LEGION 5i Pro (16")

## SPECIFICATIONS

Legion 5P 16IAH7H\*

### PERFORMANCE

#### Processor

12<sup>th</sup> Generation Intel® Core™ i9-12900H<sup>1</sup>  
12<sup>th</sup> Generation Intel® Core™ i7-12700H  
12<sup>th</sup> Generation Intel® Core™ i5-12500H

#### Operating System

Windows 11 Pro  
Windows 11 Home

#### Graphics

NVIDIA® GeForce RTX™ 3070 Ti; 8 GB GDDR6 (150W TGP, Listed Boost Clock: 1485 MHz)<sup>2</sup>  
NVIDIA® GeForce RTX™ 3070; 8 GB GDDR6 (150W TGP, Listed Boost Clock: 1620 MHz)<sup>2</sup>  
NVIDIA® GeForce RTX™ 3060; 6 GB GDDR6 (140W TGP, Listed Boost Clock: 1702 MHz)<sup>2</sup>

#### Memory

4800 MHz DDR5  
16 GB (2 x 8 GB) / 32 GB (2 x 16 GB)

#### Storage

PCIe SSD (Gen 4)  
512 GB / 1 TB

#### Battery<sup>3</sup>

80 Whr  
> 5 Hours (Target)<sup>4</sup>  
Super Rapid Charge (30 min charge 80%)

#### Power Adapter

230W Slim Adapter  
300W Slim Adapter

### DESIGN

#### Display

- 16" WQHD+ (2560 x 1600) IPS; 16:10 (165 Hz / 3 ms Response Time<sup>5</sup> / 100% sRGB / 500 nits); Up to VESA DisplayHDR™ 400 Certified / Dolby Vision® Support / NVIDIA® G-SYNC™ Support / TÜV Rheinland Certified
- 16" WQHD+ (2560 x 1600) IPS; 16:10 (165-240 Hz VRR / 3 ms Response Time<sup>5</sup> / 100% sRGB / 500 nits); Up to VESA DisplayHDR™ 400 Certified / Dolby Vision® Support / NVIDIA® G-SYNC™ Support / TÜV Rheinland Certified (TBD)
- 16" FHD+ (1920 x 1200) IPS; 16:10 (165 Hz / 3 ms Response Time<sup>5</sup> / 100% sRGB / 300 nits); Dolby Vision® Support / NVIDIA® G-SYNC™ Support / TÜV Rheinland Certified

#### Dimensions (W x D x H)

(mm) : 359.9 x 264.4 x 26.6 – 19.9  
(inches) : 14.17" x 10.41" x 1.05" – 0.78"

#### Weight

Up to 2.49 kg (5.49 lbs) (assessment data)

#### Backlit Keyboard

1.5 mm / Keycap Color / Storm Grey or White (Glacier White) / White Backlight (Storm Grey) / Blue Backlight (Glacier White) / 4-Zone RGB<sup>6</sup> / 0.3 mm Ditch / 100% Anti-Ghosting / Swappable Keycap

#### Colors

Storm Grey  
Glacier White

### CONNECTIVITY

#### Webcam

Built-in HD Webcam (720p) with E-Shutter

#### WLAN

2x2 Intel® WiFi 6E (802.11 ax)  
2x2 Intel® WiFi 6 (802.11 ax)<sup>6</sup>  
2x2 Intel® WiFi 5 (802.11 ac)<sup>6</sup>

#### Bluetooth®

Starting from Bluetooth® 5.1

#### Audio

2 x 2W Stereo Speakers with Nahimic Audio

#### I/O (Input/Output) Ports

##### Left Side

1 x Thunderbolt™ 4 (USB 4, DisplayPort™ 1.4)  
1 x USB Type-C™ (USB 3.2 Gen 2<sup>7</sup>, DisplayPort™ 1.4)

##### Right Side

1 x USB Type-A 3.2 Gen 1<sup>7</sup>  
1 x Audio Combo Jack  
1 x E-Shutter Button

##### Rear

1 x USB Type-A (USB 3.2 Gen 1<sup>7</sup> Always-On 5V)  
1 x USB Type-A (USB 3.2 Gen 1<sup>7</sup>)  
1 x USB Type-C™ (USB 3.2 Gen 2<sup>7</sup>, DisplayPort™ 1.4, PD up to 135W)  
1 x HDMI™ 2.1  
1 x RJ45 Ethernet  
1 x DC-In

### PRELOADED SOFTWARE

- Lenovo Vantage
- Lenovo PC Manager
- McAfee LiveSafe™
- Lenovo Antivirus
- Microsoft Office Trial<sup>8</sup>
- Power2Go



<sup>1</sup> Only be bound to 3070/3070Ti graphics.

<sup>2</sup> Supports NVIDIA® Max-Q Technologies: Advanced Optimus, Resizable BAR, Dynamic Boost 2.0.

<sup>3</sup> All battery life claims are approximate and based on results using the MobileMark® 2018 v1.0.2.46 battery life benchmark test. Actual battery life will vary and depends on many factors such as product configuration and usage, software use, wireless functionality, power management settings, and screen brightness. The maximum capacity of the battery will decrease with time and use.

<sup>4</sup> Final battery life to be finalized Spring 2021 or Product SS 2021. Testing conducted by Lenovo. | <sup>5</sup> With Overdrive (OD). | <sup>6</sup> Optional.

<sup>7</sup> The actual transfer speed of the USB 3.2 will vary and, depending on many factors, such as the processing capability of host and peripheral devices, file attributes and other factors related to system configuration and your operating environments, will be slower than a speed of 20 Gbit/s.

<sup>8</sup> Except Japan, India and China.

## LENOVO SERVICES

#### Legion Ultimate Support\*

Legion Ultimate Support is here to be your META - Most Effective Tactic Available. With one single point of contact, get 24/7 gamer-centric support from a team of IT experts who are gaming specialists and can help optimize your hardware & software settings to keep you productive all day and unbeatable at night.

#### Lenovo Smart Performance

Smart Performance Services within Lenovo Vantage will keep your system running at optimum performance and proactively fix issues that affect PC performance, internet performance and security.

#### Lenovo Accidental Damage Protection

Avoid the hassles of unexpected damage & repair costs. With coverage for drops, spills, electric surges, and broken LCD screens, accidental damage protection makes it easy to repair to your PCs and ensures your device is up and running fast.

#### Lenovo Sealed Battery

Long-lasting battery life is not just a feature but a necessity to help you stay productive and connected all day long. Protect your PC's sealed battery from degradation, enjoy hassle-free battery replacement service, and safeguard your PC from future battery failure with our Sealed Battery Warranty Service.

#### Lenovo Warranty Extensions (Up to 3 Years Duration)

Gain complete peace of mind by extending your base warranty to up to 3 years and minimize unexpected repair costs.

#### Lenovo CO<sub>2</sub> Offset Services

Now give back to the environment in a tangible way! Lenovo CO<sub>2</sub> Offset Service gives you a simple and transparent way to offset carbon emissions and help the environment by supporting one of several United Nations Climate Action projects, including those that help to improve renewable energy, reduce air pollution, or enhance safe waste disposal, all of this at just the click of a button.

#### Legion Arena

The Legion Arena app lets you access all your games no matter where you purchased from, see what games other Arena users are playing, and earn rewards and achievements for how you play. Stop switching between different apps to find what you want to play - they all have a new home inside Legion Arena.

\* Available in NA, CAP (except South Korea), IN, JP only. Not available in EMEA, ANZ, and LAS.

## McAfee® LiveSafe™

Register McAfee® to enjoy these benefits in your FREE 30-day trial.

- Award-winning Antivirus
- Multi-device Compatibility
- Password Manager
- Identity Theft Protection
- Safe Web Browsing
- Free Customer Support



WWW.LENOVO.COM

Lenovo reserves the right to alter product offerings and specifications at any time, without notice. Lenovo makes every effort to ensure accuracy of all information but is not liable or responsible for any editorial, photographic or typographic errors. All images are for illustration purposes only. For full Lenovo product, service and warranty specifications visit [www.lenovo.com](http://www.lenovo.com). Lenovo makes no representations or warranties regarding third party products or services. **Trademarks:** The following are trademarks or registered trademarks of Lenovo: Lenovo, the Lenovo logo, ideapad, IdeaCentre, yoga and yoga logo. Microsoft, Windows and Vista are registered trademarks of Microsoft Corporation. Ultrabook, Celeron, Celeron Inside, Core Inside, Intel, Intel Atom, Intel Atom Inside, Intel Core, Intel Inside, Intel Inside Logo, Intel vPro, Itanium, Itanium Inside, Pentium, Pentium Inside, vPro Inside, Xeon, Xeon Phi, and Xeon Inside are trademarks of Intel Corporation in the U.S. and/or other countries. Other company, product and service names may be trademarks or service marks of others. Visit [www.lenovo.com/lenovo/us/en/safecom/](http://www.lenovo.com/lenovo/us/en/safecom/) periodically for the latest information on safe and effective computing. ©2022 Lenovo. All rights reserved.

## OPTIONS & ACCESSORIES



Lenovo Legion M300s RGB Gaming Mouse



Lenovo Legion H300 Stereo Gaming Headset



Lenovo Legion Active Gaming Backpack

\* Example of Lenovo catalogue naming convention

Legion	5   P	1 6 I A H 7 H
Sub-brand	Position	Screen size or volume (litre)
		Platform
		Generation



Lenovo